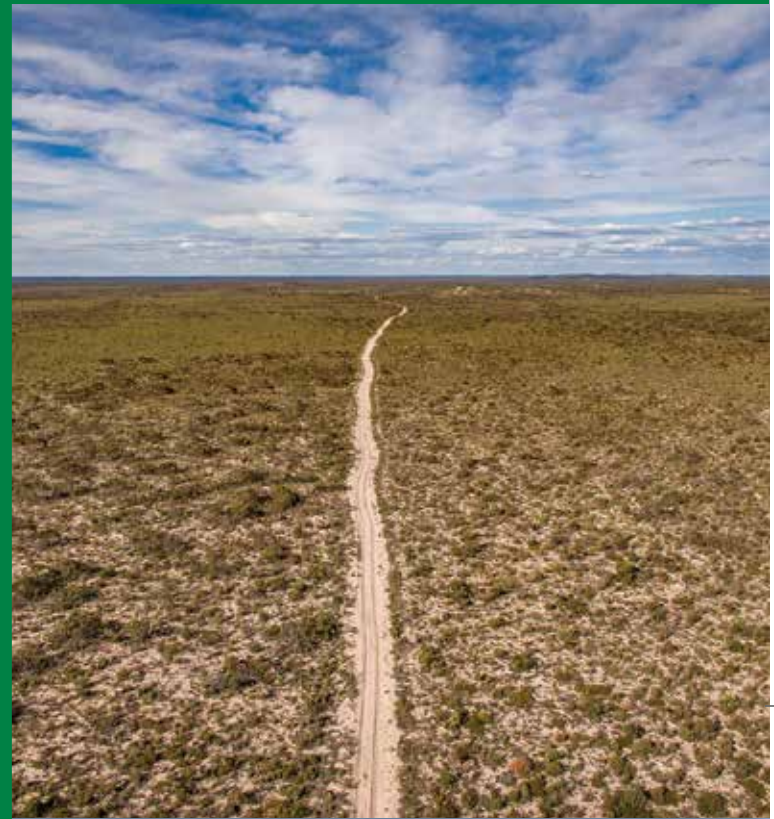


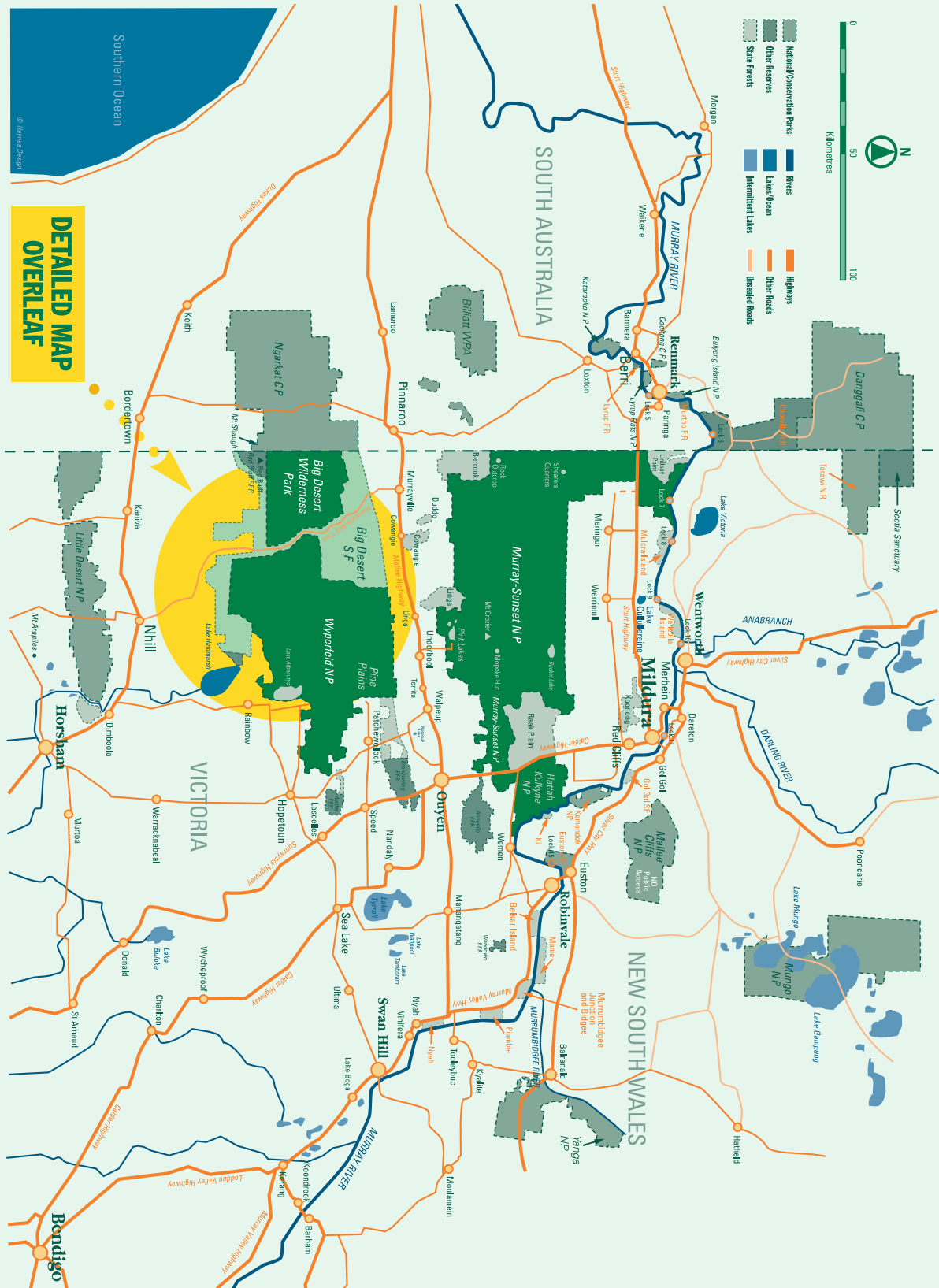
Big Desert State Forest 4WD TOURING MAP



Environment,
Land, Water
and Planning

FOREST FIRE MANAGEMENT VICTORIA

Mallee State Forests & Parks



WILDERNESS AREAS

The Big Desert Wilderness Park preserves almost untouched Mallee landscape. Big Desert Wilderness Park, along with other wilderness zones in Wyperfeld National Park, offer secluded bushwalking trails and the opportunity to experience life in the wilderness.

Please note driving is prohibited in the Wilderness Areas. Camping is permitted however there are no facilities provided.

SERVICES & SUPPLIES

Murrayville is 33 kilometres north of Big Billy Bore and offers accommodation as well as emergency services.

Pinnaroo is approximately 60 kilometres north-west of Big Billy Bore via Murrayville. It is a larger township than Murrayville and offers visitors accommodation and fuel.

Nhill is 138 kilometres south of Big Billy Bore and offers visitors accommodation and fuel.



MORE TO EXPLORE APP

Download the More to Explore App for comprehensive information and interactive maps on what to see and do in Victoria's three million hectares of state forest. www.ffm.vic.gov.au/more-to-explore

In case of an emergency, call 000. Parks and state forests will be closed on Code Red Fire Danger days. For the latest emergency information, download the VicEmergency App.



NO FIRES ON DAYS OF TOTAL FIRE BAN

TRADITIONAL OWNERS

Forest Fire Management Victoria (FFMVic) acknowledges the Traditional Owners of the Big Desert area - the Wotjobaluk, Jaadwa, Jadawadjali, Wergaia and Jupagalk peoples. Through their cultural traditions, Aboriginal people maintain their connection to their ancestral lands and waters, which stretches back over many tens of thousands of years. The soaks and springs in the area were a valuable resource supporting agriculture, trade and habitation.

The Traditional Owners are represented by the Barengi Gadjin Land Council, who were recognised in a 2005 Native Title Consent Determination. As part of this Determination, there is a suite of Settlement Agreements which recognises the rights, interests and contribution of knowledge from the Wotjobaluk Nations into the management of this area.

HISTORY OF THE BIG DESERT BORES

Big Billy Bore was first installed in the 1800s and was used by stockmen to water their stock as they drove them from Nhill Station to Kow Plains Station. The original track went from this point through to Mountain Pine and the back of Cowangie. The original bore had a hand pump. The existing bore was sunk in 1912 and is 73.15 metres deep. Many of the other old bores along the track were sunk by the government to make water available to the Murrayville farmers who ran sheep in the drought years in the desert. These bores included Cactus Bore, John's Bore, and Sim Perry's hand pump. W. Chatterton, R. Forsyth and J. Ireland were some of the local contractors who sunk these bores in 1928.

The Big Billy Bore and Windmill were refurbished in 2016 by FFMVic. New bore casing was installed to 69.3 metres and the static water level measured at 22.7 metres below surface level. The water contains many natural minerals however it is not compliant under the Victorian *Safe Drinking Water Act 2003* and should not be consumed.

FURTHER INFORMATION

Phone: **136 186**
www.ffm.vic.gov.au

Disclaimer

This publication may be of assistance to you but the State of Victoria and its officers do not guarantee that the publication is without flaw of any kind or is wholly appropriate for your particular purpose and therefore disclaims all liability for any error, loss or other consequences which may arise from you relying on any information in this publication.



NO FIRES ON DAYS OF TOTAL FIRE BAN

Environment,
Land, Water
and Planning

FOREST FIRE MANAGEMENT VICTORIA

Authorised by the Victorian Government,
Cnr of Koorlong Avenue and Eleventh Street Irymple

Produced - Sept 2021

Big Desert State Forest

TOURING FROM BIG BILLY BORE CAMPING AREA

Tracks in the Big Desert State Forest will challenge your four-wheel driving skills and give you the chance to see a range of native flora and fauna - you may even spot the endangered Malleefowl or the critically endangered Mallee Emu-wren.

Take a short walk from the Big Billy camp ground to the viewing platform which is perfect for stargazing and has intermittent phone coverage.

ROUTE 1
State forest west of Nhill Murrayville Track - 57 kilometres/3 hours
 Access via **Cactus Bore and Firebreak Tracks**.

On this route you will see the iconic red, blue and yellow gum trees which stand tall in the surrounding heathland vegetation. Camping is permitted however there are no facilities and all rubbish must be taken with you.

ROUTE 2
12 Mile Patch Track - 100 kilometres/5 hours
 White Springs to Twelve Mile Patch returning via Fire Break Track. Pines, casuarinas and open areas with soaks break up the Mallee vegetation on this route and provide shady spots to stop for a break.

ROUTE 3
State forest east of Nhill Murrayville Track - 45 kilometres/2.5 hours
 Brushcutters Track via Brushcutters Flat, returning via Delisio Track. This route will take you through steep sand dunes. Take extra care in dry conditions.

ROUTE 4
Ngarkat Conservation Park & SA/VIC Border - 190 kilometres/9 hours
 Access via Firebreak Track West returning via Red Bluff Track. The Border Track within South Australia's Ngarkat Conservation Park provides some spectacular views of the Mallee environment. A challenging 4WD sandy track is open during the cooler months (closed 1 November to 31 March) with traffic southbound only. Low clearance vehicles or towing vehicles are recommended to use the alternative route via the Centre Track to meet back with the Border Track on the two way section. Entry and Camping fees apply visit parks.sa.gov.au for further information and to obtain your permit.

ROUTE 5
Wyperfeld National Park east of Nhill Murrayville Track - 175 kilometres/7 hours
 Milmed Rock Track to park boundary along Pella Track returning via Chinaman's Well Track. There are two camp sites along this route - one at Round Swamp and another at Milmed Rock Swamp. However facilities are only available at the Round Swamp campsite.

ROUTE 6
Wyperfeld National Park east of Nhill Murrayville Track - extension to Route 5
 Travelling via Lake Hindmarsh to Rainbow and returning via Herman's Hill Lookout on Netting Fence Track or Chinaman's Well Track. Herman's Hill Lookout was developed by the local community with support from students of Nhill College. It offers scenic views of Lake Hindmarsh Big Desert State Forest and surrounding farmland.

Ngarkat Conservation Park continues beyond this point. Refer to local maps & visitor information boards.



BIG BILLY BORE CAMPING & INFORMATION
 Big Billy Bore Camping Area was established to reduce the impact of remote camping on the forest. Visitor facilities include water, toilets and a picnic shelter.

Please keep the area clean and tidy for others to enjoy and take all rubbish with you. Big Billy Bore is located at:
 Latitude: 35.51561°S
 Longitude: 141.31720°E

TRACK ACCESS
 Please stay on signposted tracks. All other tracks are only to be used by management vehicles or people with specific access requirements such as beekeepers. Recreational visitors must not drive on unsignposted tracks.

WARNING: The Nhill-Murrayville Track can become very slippery when wet. Please drive to conditions.

TREAD LIGHTLY
 Please take care to protect the natural environment. Leave nothing but footprints, take nothing but photographs.

NHILL - YANAC - MURRAYVILLE ROUTE
 This route provided access between Nhill Station and Kow Plains Station for stockmen with cattle and sheep in the 1860s. The route was only suitable for wagons and two-wheel vehicles until it was upgraded in the 1930s by local contractor Mott Smith and his gang. Many of the tanks and windmills used by early stockmen remain.



Photo: Big Billy day use area and information site.

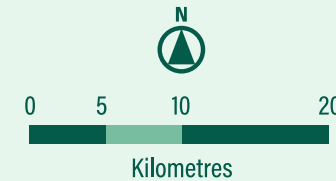


Photo: Big Billy camp ground and facilities



Photo: Stockman's camp ground and facilities

- Information
- Water
- Toilet
- Camping
- Fireplace
- Tables
- Limited Services
- Gas BBQ
- Bushwalking / Sightsseeing
- Lookout
- Petrol / Diesel
- Gas
- 24hr Service
- Historic
- 4WD Track



Wyperfeld National Park continues beyond this point. Refer to local maps & visitor information boards.